

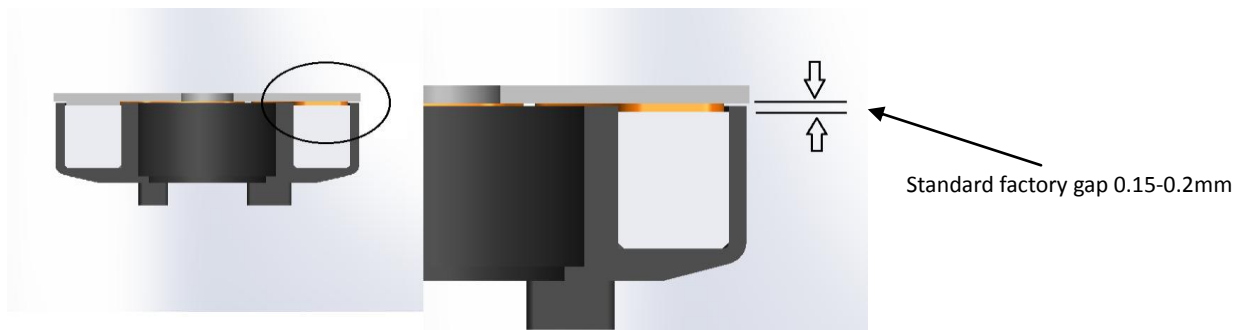
Brakes Adjusting

Electric brakes like another braking systems, is likely to become unbalanced with the use. Electron has developed a high tech control unit with internal gyroscope for compensate this unbalanced between main wheels, and do more easy maintain the trajectory on the runway.

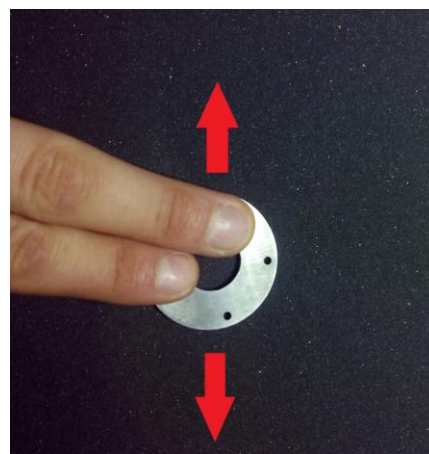
Anyway, a lot of customers will continue using the RB-45 or RS-200 (without gyroscope), and this manual will try to help them.

As the next drawing, shows, the performance of the brakes will be increased exponentially while decreasing the gap between magnet and disk. It means that the performance of the brakes will be increasing with the use, because the disk pads will be wear down.

If the thickness of the pads disc is reduced, the braking torque will be increase.



If we need increase the braking power or we need equilibrate the braking power between both wheels, we can wear down the disk pads artificially with a simply fine sandpaper, like the next photo show. Removing only about 0.02mm height, we will feel the increase of the braking torque. We will need wear down the disk with less power, for try balance the torque between both wheels, and we will need wear down both wheels if we want increase the braking power in both magnets.



Please, be carefull, and often test for avoid wear the disk excessively. It will shorten the disk life.